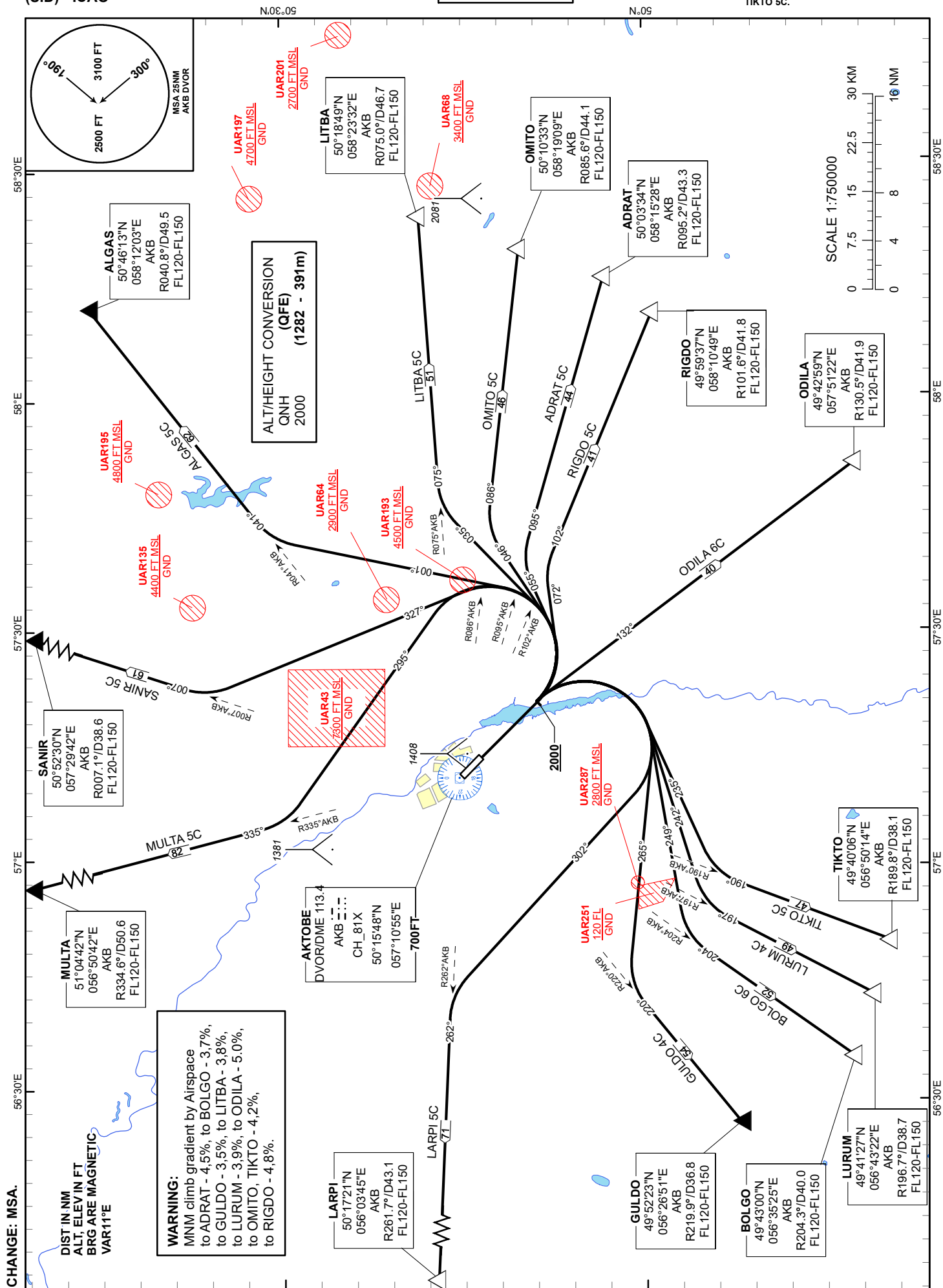


AKTOBE
RWY 12



STANDARD DEPARTURE ROUTES – INSTRUMENT (SID) AKTOBE RWY 12
MULTA 5C After take-off climb straight ahead to 2000 FT or above, turn LEFT on track 295°, until intercept R335° AKB, then proceed to MULTA (R334.6° D50.6 AKB). Cross MULTA at FL120-FL150
SANIR 5C After take-off climb straight ahead to 2000 FT or above, turn LEFT on track 327°, until intercept R007° AKB, then proceed to SANIR (R007.1° D38.6 AKB). Cross SANIR at FL120-FL150
ALGAS 5C After take-off climb straight ahead to 2000 FT or above, turn LEFT on track 001°, until intercept R041° AKB, then proceed to ALGAS (R040.8° D49.5 AKB). Cross ALGAS at FL120-FL150
LITBA 5C After take-off climb straight ahead to 2000 FT or above, turn LEFT on track 035°, until intercept R075° AKB, then proceed to LITBA (R075.0° D46.7 AKB). Cross LITBA at FL120-FL150
OMITO 5C After take-off climb straight ahead to 2000 FT or above, turn LEFT on track 046°, until intercept R086° AKB, then proceed to OMITO (R085.6° D44.1 AKB). Cross OMITO at FL120-FL150
ADRAT 5C After take-off climb straight ahead to 2000 FT or above, turn LEFT on track 055°, until intercept R095° AKB, then proceed to ADRAT (R095.2° D43.3 AKB). Cross ADRAT at FL120-FL150
RIGDO 5C After take-off climb straight ahead to 2000 FT or above, turn LEFT on track 072°, until intercept R102° AKB, then proceed to RIGDO (R101.6° D41.8 AKB). Cross RIGDO at FL120-FL150
ODILA 6C After take-off climb straight ahead to 2000 FT or above, turn RIGHT on track 132°, then proceed to ODILA (R130.5° D41.9 AKB). Cross ODILA at FL120-FL150
TIKTO 5C After take-off climb straight ahead to 2000 FT or above, turn RIGHT on track 235°, until intercept R190° AKB, then proceed to TIKTO (R189.8° D38.1 AKB). Cross TIKTO at FL120-FL150
LURUM 4C After take-off climb straight ahead to 2000 FT or above, turn RIGHT on track 242°, until intercept R197° AKB, then proceed to LURUM (R196.7° D38.7 AKB). Cross LURUM at FL120-FL150
BOLGO 6C After take-off climb straight ahead to 2000 FT or above, turn RIGHT on track 249°, until intercept R204° AKB, then proceed to BOLGO (R204.3° D40.0 AKB). Cross BOLGO at FL120-FL150
GULDO 4C After take-off climb straight ahead to 2000 FT or above, turn RIGHT on track 265°, until intercept R220° AKB, then proceed to GULDO (R219.9° D36.8 AKB). Cross GULDO at FL120-FL150
LARPI 5C After take-off climb straight ahead to 2000 FT or above, turn RIGHT on track 302°, until intercept R262° AKB, then proceed to LARPI (R261.7° D43.1 AKB). Cross LARPI at FL120-FL150